



Airwell

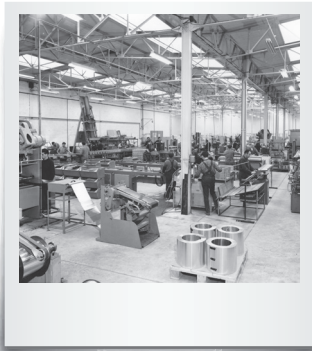


**Heat pumps, Air conditioning
& Renewable energy ranges
2024/2025**

Airwell

YOUR FRENCH REFERENCE

for over 75 years



Airwell, a French thermal equipment manufacturer committed to the energy transition

A French referenced brand for professionals

As an expert and creator of climate and thermal solutions, Airwell's mission is to create and cultivate well-being. Airwell is committed to:



Reinventing uses

→ To limit our environmental footprint.



Optimising consumption

→ To consume less and better.



Promoting solar energy

→ To preserve natural resources.

Historical French manufacturer

- 1947 ● **Creation of the Airwell Group**, the French pioneer in heat pumps.
- 1970 ● Airwell becomes **the leading European** heat pump manufacturer. Leader in Europe and Africa.
- 2008 ● Industrial disengagement and restructuring of the Airwell Group.
- 2014 ● Launch of the **Airwell 2.0** strategic project (the transformation from a heat pump manufacturer to a solution provider).
- 2020 ● Launch of our offer for private customers: **Hybrid house**.
- 2021 ● **Airwell becomes Airwell Group** following the acquisition of Airwell Residential by Airwell Distribution.
- 2022 ● Integration of the **CSR approach** into the strategy and award of the **"Innovative Company"** label by BPI France. Launch of our Renewable Energy offer.
- 2023 ● Airwell Group acquires Amzair Industrie and sets up its **Airwell Industrie** production site in Brittany to enrich the Group's ecosystem in the design and manufacture of **100% French and connected heat pumps**.

GROUPE AIRWELL

INNOVATION • SERENITY • COMFORT LISTENING • COMMITMENT

Airwell manifesto

A vision for the future.

This is how Airwell was born in 1947. With the crazy idea of bringing innovative solutions from the United States that did not yet exist in Europe: air conditioning.

Today, innovation is more than ever at the heart of Airwell, as we have become leaders in the creation of thermal and climatic solutions. A deeply human innovation, listening to consumers.

Just like the family spirit that defines Airwell, based on wellbeing and respect for everyone's expectations.

Optimising our energy consumption, favouring solar energy to preserve our natural resources, reinventing consumer uses to limit our environmental footprint, cultivating the comfort of each interior...

At Airwell, we are committed to this for the well-being of everyone and the environment.

"What was our ambition became our mission."

Yes, energy solutions must be intuitive in their management and use.

Yes, they must reduce the ecological and economic impact of housing.

Yes, the world of tomorrow must be built around a single principle: the serenity of each individual.

"And we are convinced of this."

Our most beautiful energy story is you.

Want to invest and become a contributor in the energy transition?

A propitious context:



→ Airwell, the French reference for heat pumps



→ A market driven by new environmental standards



→ A CSR approach at the heart of Airwell



→ A strategy of conquest driven by the new management



→ Airwell, French expert and manufacturer since 1947



→ Innovative energy-efficient solutions

I become a shareholder

All the steps are detailed on our website:

groupe-airwell.com/en/become-a-shareholder/



110
employees



200+
business partners



70+
service partners



80
Airwell operates
in 80 countries

AIR/WATER range



WELLEA M HT

Monoblock heat pump with natural R290 fluid

 COOLING 4.50 to 14.90 kW
  HEATING 4.50 to 15.00 kW
  FLUID R290



WELLEA WT MT

Triple-service split heat pump

 COOLING 4.50 to 14.90 kW
  HEATING 4.25 to 16.00 kW
  FLUID R32



WELLEA S MT

Split heat pump

 COOLING 4.50 to 14.90 kW
  HEATING 4.25 to 16.00 kW
  FLUID R32



WELLEA M MT

Monoblock heat pump

 COOLING 4.50 to 14.90 kW
  HEATING 4.20 to 16.00 kW
  FLUID R32



WELLEA M DF MT

Monoblock heat pump

 COOLING 18.50 to 31.00 kW
  HEATING 18.30 to 29.93 kW
  FLUID R32



ELEO S

Split thermodynamic water heater

 CAPACITIES 200L & 260L
  FLUID R134A



ELEO M

Monoblock thermodynamic water heater

 CAPACITIES 120L, 190L & 260L
  FLUID R134A



ELEO MS

Solar thermodynamic water heater

 CAPACITIES 190L & 300L
  FLUID R134A

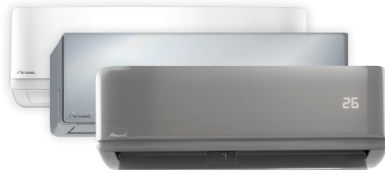
AIR/AIR range



HDHC Artica

High wall monosplit & multisplit
High efficiency &
Energetic efficiency

COOLING 2.73 to 7.03 kW
HEATING 3.14 to 7.33 kW
FLUID R32



HDMB Harmonia Colour range

High wall monosplit & multisplit

COOLING 2.64 to 7.03 kW
HEATING 2.92 to 7.33 kW
FLUID R32



HDLE Aura

High wall monosplit &
multisplit - Built-in Wi-Fi

COOLING 2.20 to 6.20 kW
HEATING 2.40 to 6.50 kW
FLUID R32



HDLA Aura

High wall monosplit
& multisplit - DC inverter

COOLING 2.64 to 7.03 kW
HEATING 2.93 to 7.33 kW
FLUID R32



ZDAA

Residential multisplit
duo/trio/quattro/cinco

COOLING 4.10 to 12.31 kW
HEATING 4.40 to 12.31 kW
FLUID R32



ZDAE

Residential multisplit
duo/trio/quattro/cinco

COOLING 4.10 to 12 kW
HEATING 4.40 to 13 kW
FLUID R32



XDLF

Dual-flow console
monosplit & multisplit

COOLING 2.70 to 5.20 kW
HEATING 2.90 to 5.33 kW
FLUID R32



XDMX

Dual-flow console
monosplit & multisplit

COOLING 3.52 to 4.98 kW
HEATING 3.81 to 5.28 kW
FLUID R32



FDMX

Floor ceiling
monosplit & multisplit

COOLING 5.28 to 15.83 kW
HEATING 5.57 to 18.17 kW
FLUID R32



FDLK

Low-temperature floor
ceiling monosplit

COOLING 5.30 to 7.00 kW
FLUID R32

SDMX
Floor standing
Inverter monosplit



COOLING 14.07 kW HEATING 16.12 kW FLUID R32

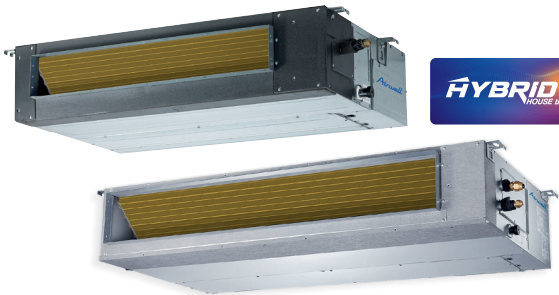


JDAA AIRFLOW
Thermodynamic
dual-flow CMV



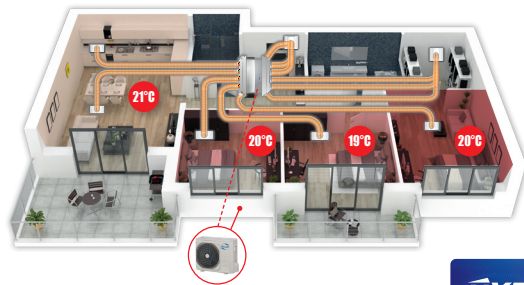
Airflow from 125 to 320 m³/h

COOLING 0.92 to 2.07 kW HEATING 1.42 to 2.49 kW FLUID R32



DDMX
Ducted monosplit & multisplit

COOLING 2.05 to 15.24 kW HEATING 2.34 to 18.17 kW FLUID R32



WELLZONE
Zone-by-zone regulation
monosplit & multisplit

Zone control: the ideal temperature in each room (up to 6 zones).



CDMX
360° cassette monosplit & multisplit

COOLING 2.05 to 14.07 kW HEATING 2.35 to 16.12 kW FLUID R32



XDAW
Monoblock console

COOLING 2.35 kW HEATING 2.36 kW FLUID R32



WFAE
Window - DC Inverter

COOLING 2.75 and 3.70 kW FLUID R32



MFH
Portable - Cooling only

COOLING 2.93 and 3.52 kW FLUID R290

SOLAR range

*Air*Solar
SOLUTIONS



PV modules
375 and 500 Wc



Electrical boxes
Up to 6.00 kW single phase
and up to 9.00 kW three-phase



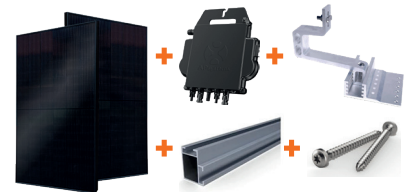
Micro-inverters and
wiring accessories
730 and 880 VA



Hybrid Inverter, batteries and
"Plug and Play" cabinet for
energy storage



Fixing systems
Tile, slate, steel roofing,
fibre cement and flat roof/floor



Photovoltaic kits
From 0.75 to 9.00 kWc*
* and more on request

WATER-COOLED range



XDOW
Water-cooled console

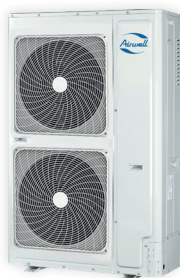
COOLING 2.50 to 3.50 kW
HEATING 2.70 to 3.80 kW
FLUID R410A



DFMO
Water-loop heat pump

COOLING 2.26 to 25.00 kW
HEATING 2.76 to 33.20 kW
FLUID R410A

VRF range



VVFA 2-pipes
Front discharge

COOLING 12.10 to 31.50 kW
HEATING 14.20 to 31.50 kW
FLUID R410A



VVTA 2-pipes
Top discharge

COOLING 25.20 to 294 kW
HEATING 25.20 to 294 kW
FLUID R410A



VVEA 3-pipes
Top discharge

COOLING 122.40 to 246 kW
HEATING 22.40 to 246 kW
FLUID R410A

AIRWELL, MAIN PARTNER OF
THE **STADE FRANÇAIS PARIS**

Airwell



A COMMITTED PARTNERSHIP

Airwell, a French player committed to the energy transition, has chosen Stade Français Rugby for its first sports partnership, to represent their common values, in particular in terms of the ecological and environmental transitions.



**AFTER-SALES AND
QUALITY SERVICE**

+33 (0)1 76 21 82 95

Monday to Friday 9 am-1230 pm / 2 pm-5 pm

TECHNICAL SUPPORT

sav@airwell.com

GROUPE AIRWELL

10, rue du Fort de Saint-Cyr - 78180 Montigny-le-Bretonneux, FRANCE

Tel: +33 (0)1 76 21 82 00 - www.airwell.com

Printed in France